

# THE LOWER FOYER

8 meeting rooms  
+ 4 organiser's offices

Each space  
is unique





# THE LOWER FOYER



## WELCOMING AND CONFIDENTIAL

The Lower Foyer space combines several conference rooms adjacent to the Great Hall. It provides an ideal setting for an event up to 300 people, or as part of a larger event held in La Cité.

**8**

Meeting rooms

**4**

Organiser's offices

**Space**  
Fully available for private hire

### FEATURES

- Sound, lighting and video management according to room
- Cameras in room 300 and video control rooms equipped for streaming
- Stages with PRM access



Wifi



Natural Light



Power for lighting / air-conditioning / heating



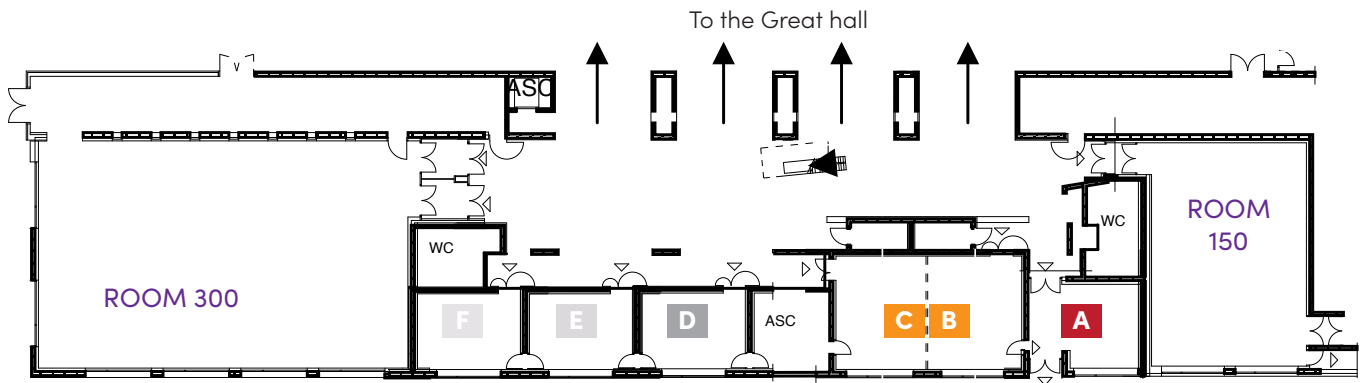
## Advantages

- ✓ The space is fully available for private hire
- ✓ Close to the various auditoriums with direct access to the Great Hall
- ✓ Exclusive break area





# TECHNICAL DATA



## ROOMS IN THE UPPER FOYER

	ROOM NAME	SURFACE AREA	DIMENSIONS L x W	HEIGHT	THEATRE-STYLE LAYOUT CAPACITY	CLASS-ROOM-STYLE LAYOUT CAPACITY	DAY	SOUND	VIDÉO	TRANSLATION
	Room 300	315 m <sup>2</sup>	22,5 x 14 m	5,4 m	300	180	•	•	•	•
	Room 150	140 m <sup>2</sup>	14,02 x 10 m	4,25 m	150	72	•	•	•	•
Modular rooms	Room A	19,86 m <sup>2</sup>	4,62 x 4,3 m	3,0 m	19 + 2 speakers	8			•	
	B ou C*	40,70 m <sup>2</sup>	5,5 x 7,4 m	2,95 m	30	20		•	•	
	B + C*	81,40 m <sup>2</sup>	11 x 7,4 m	2,95 m	80	45		•	•	
	Room D	29,25 m <sup>2</sup>	6,5 x 4,5 m	2,95 m	30	18			•	
	Room E	29,25 m <sup>2</sup>	6,5 x 4,5 m	2,95 m	30	18			•	
	Room F	29,25 m <sup>2</sup>	6,5 x 4,5 m	2,95 m	30	18			•	
	Organiser's offices	4 offices from 10 to 30 m2								

\*Modular rooms with mobile partitions either 2 x 42 m2 or 84 m2



VIRTUAL VISIT  
WITH PLANS AND  
DIMENSIONS  
At [lacite-nantes.com](http://lacite-nantes.com)